

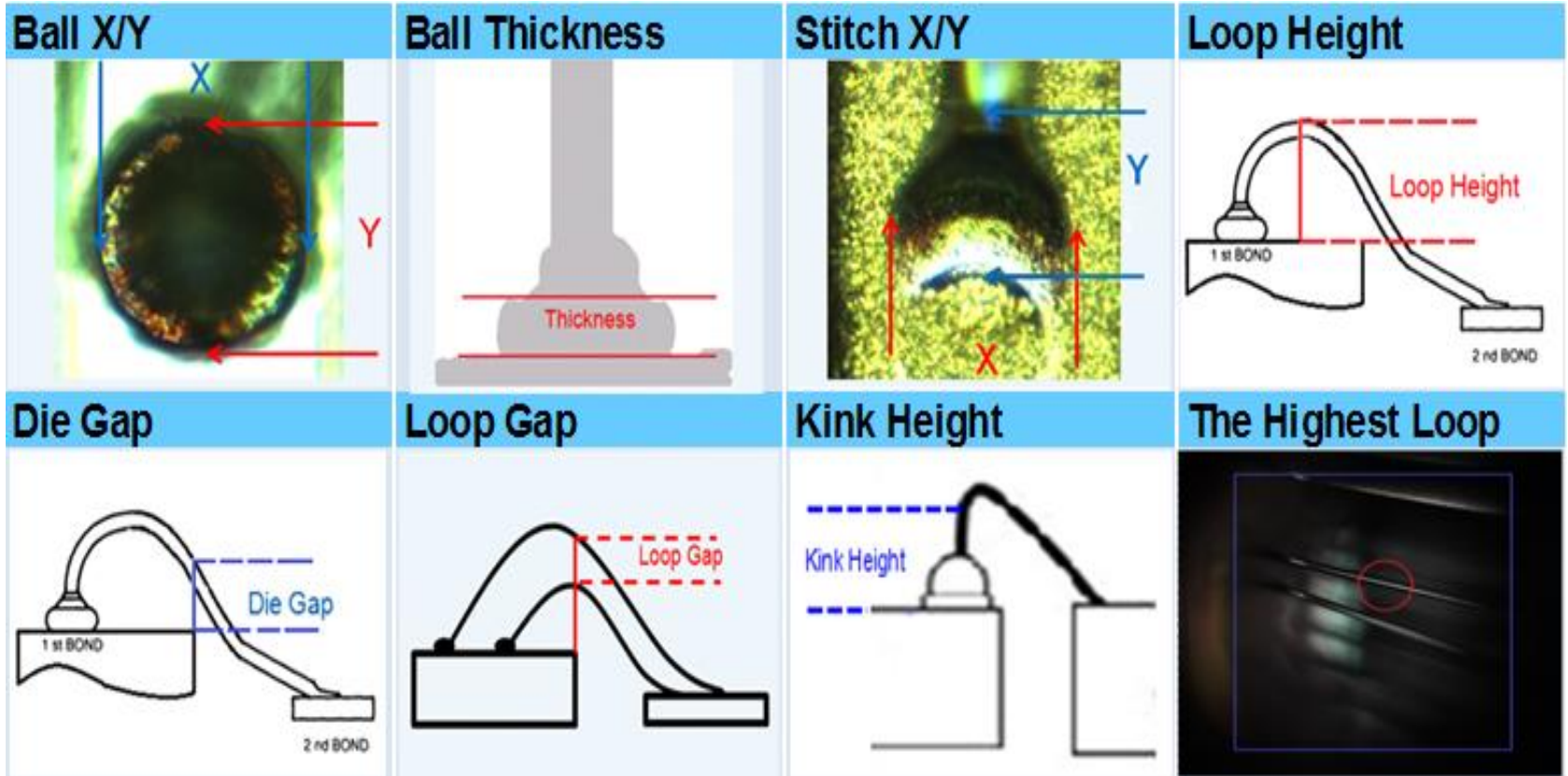
HL-620

Wire bond auto measure system

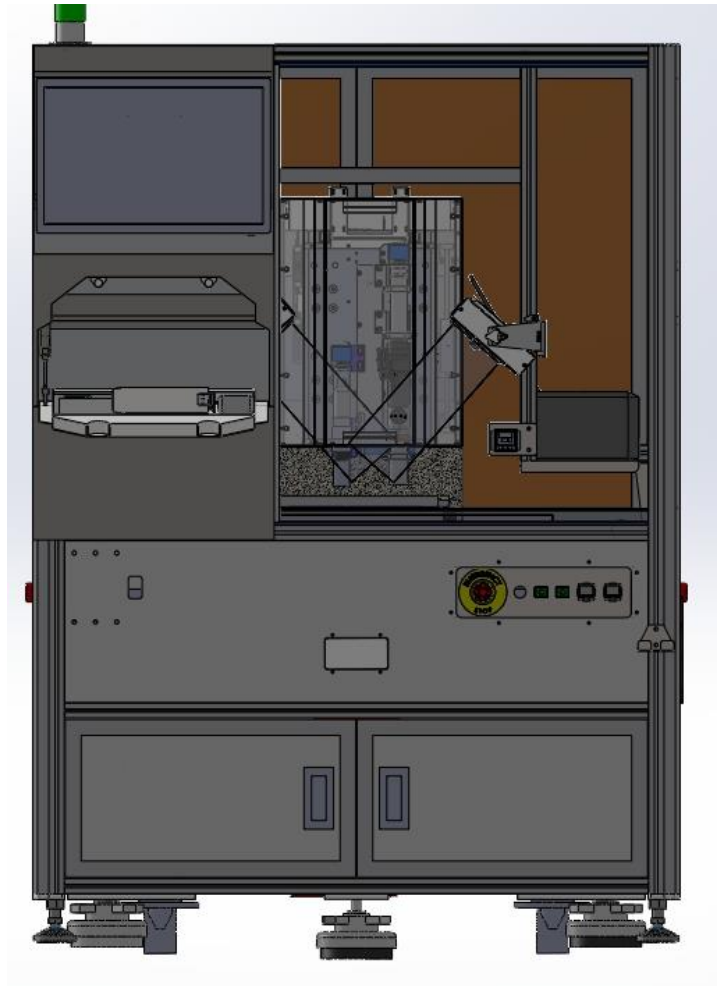
Outline

- Measurement items
- System layout
- Magnification change module
- Operation flow
- User interface
- Report example
- HL-620 General Specification

Measurement items

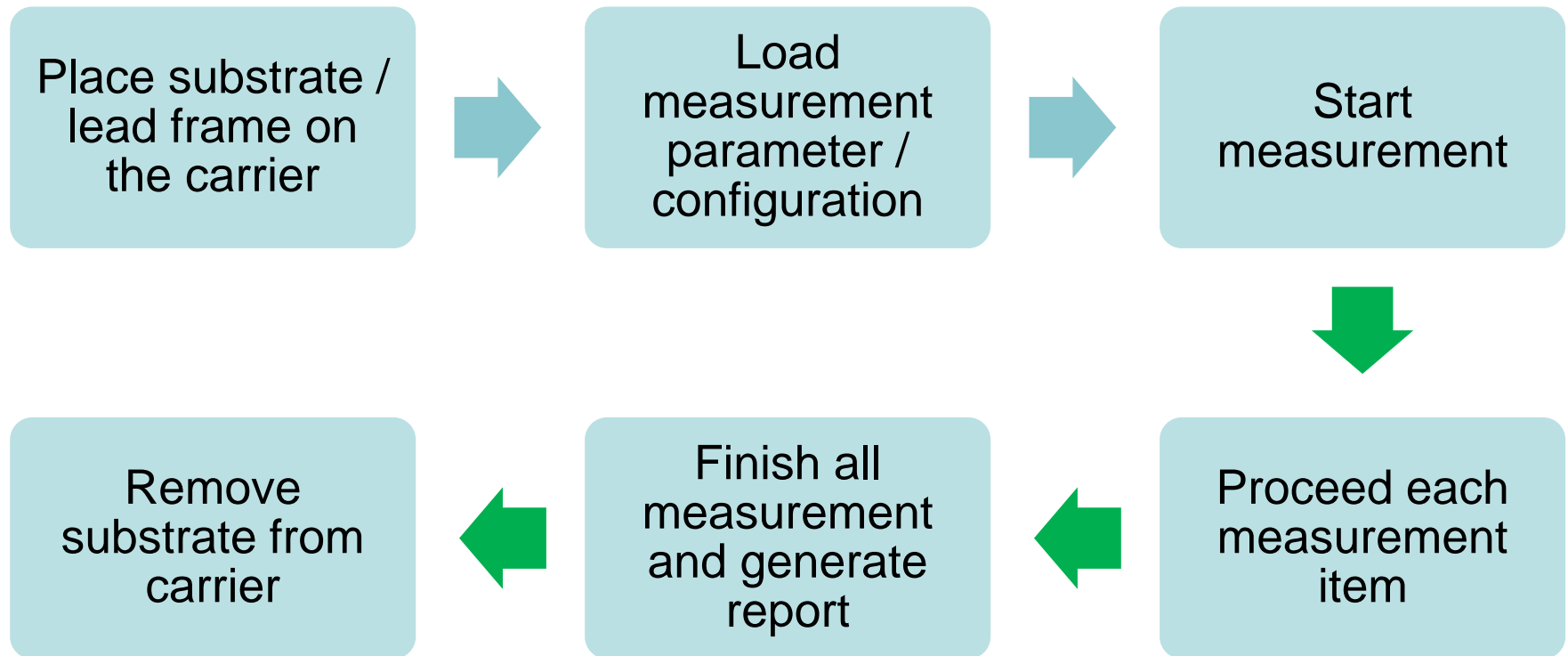


System layout



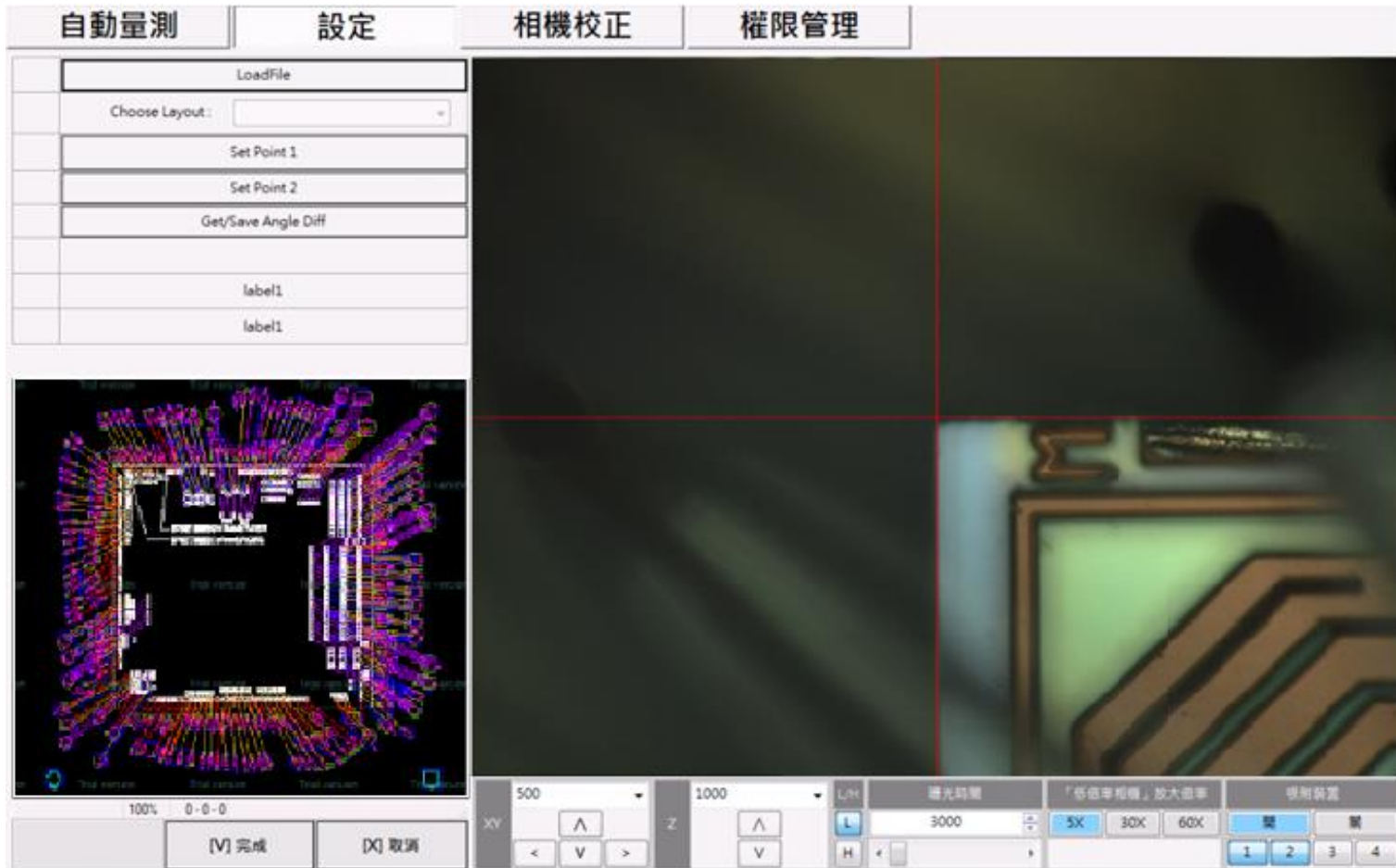
HI-LO SYSTEMS

Operation flow



User Interface

Program (Teach mode)



User Interface

Auto measurement mode

自動量測 設定 相機校正 權限管理

量產模式主畫面
建立工單
設定規格表
選擇目標量測項目
開始手動量測

統計資訊

工單單號	----
圖號	test 0308
批號	----
工號	----
時機	----
機號	----
時間	----
多晶體數	----
線材	----
線徑	----
弧高上限	----
弧高下限	----

開始時間	15:36:38
完成時間	15:38:59
檢測時間	0h 2m 20s

自動量測結果

Block(X=0,Y=0)_MCM(X=0,Y=0)							
DieItem_0							
Ball #	0	X:	27.57	Y:	27.06	Z:	13.29
Ball #	1	X:	27.61	Y:	28.2	Z:	10.7
Ball #	2	X:	27.65	Y:	27.87	Z:	14.68
Ball #	3	X:	27.5	Y:	28.13	Z:	9.55
Loop H.	# 0	Height:	93.52				

開始量測 停止量測

放大

X:	4100000
Y:	0
Z:	999999
U:	73501
軟體版本:	2016/03/03

[二標點_0] 測試已完成

移到出料區 離開

Report example (.CSV)

批號	WB150129				
工號	920135				
時機					
機號	WB601				
時間	20161020				
多晶體數					
線材	C/W				
線徑	1				
弧高上限					
弧高下限					
Ball	59.63	58.86	59.6	62.02	60.07
BallY	59.63	59.71	60.44	60.7	60.9
BallZ	13.8	12.19	11.95	11.19	11.74
LoopHeight	305.1	340.12	361.22	277.84	280.46
LoopGap	60.25	67.77	68.25	69.24	68.47
DieGap	250.23	265.32	258.29	248.17	268.19
StitchX	51.91	53.35	51.84	58.97	51.43
StitchY	30.85	28.79	31.51	29.82	29.38
TheHighestLoop	308.03	342.99	359.98	255.94	306.03

HL-620 General Specification

Dimension	1120 * 1220* 1700 mm
Weight	1460 kg
Power requirement	220 VAC 60Hz 10A 1KW
Air consumption	0.6MPa, 55 l/min
Substrate / lead frame size	W : 25~80 mm L : 140~300 mm
Working platform / carrier	X/Y table working range: 400*140mm X/Y table resolution:± 0.1um Z axis resolution:± 0.01um Support lead frame / substrate
Measure	5M Camera , sensor size 1" 5X resolution:1 um / pixel 50X resolution:0.1 um / pixel 100X resolution:.0.05 um / pixel Ball(X/Y)/Stitch(X/Y) Measurement range:10~60um Ball(Z) Measurement range:1~800um Loop Height/Die Gap/Loop Gap/Kink Height/The Highest Loop Measurement range:1um ~ 5000um The Highest Loop search area:2500x2000um
Measure cycle time	Cu(1 Wire / Ball, Loop, Stitch):35 sec Au(1 Wire / Ball, Loop, Stitch):40 sec
Report format	TXT/XML/CSV
Communication interface	SECS/GEM (Optional)
User interface	Monitor, keyboard, barcode reader